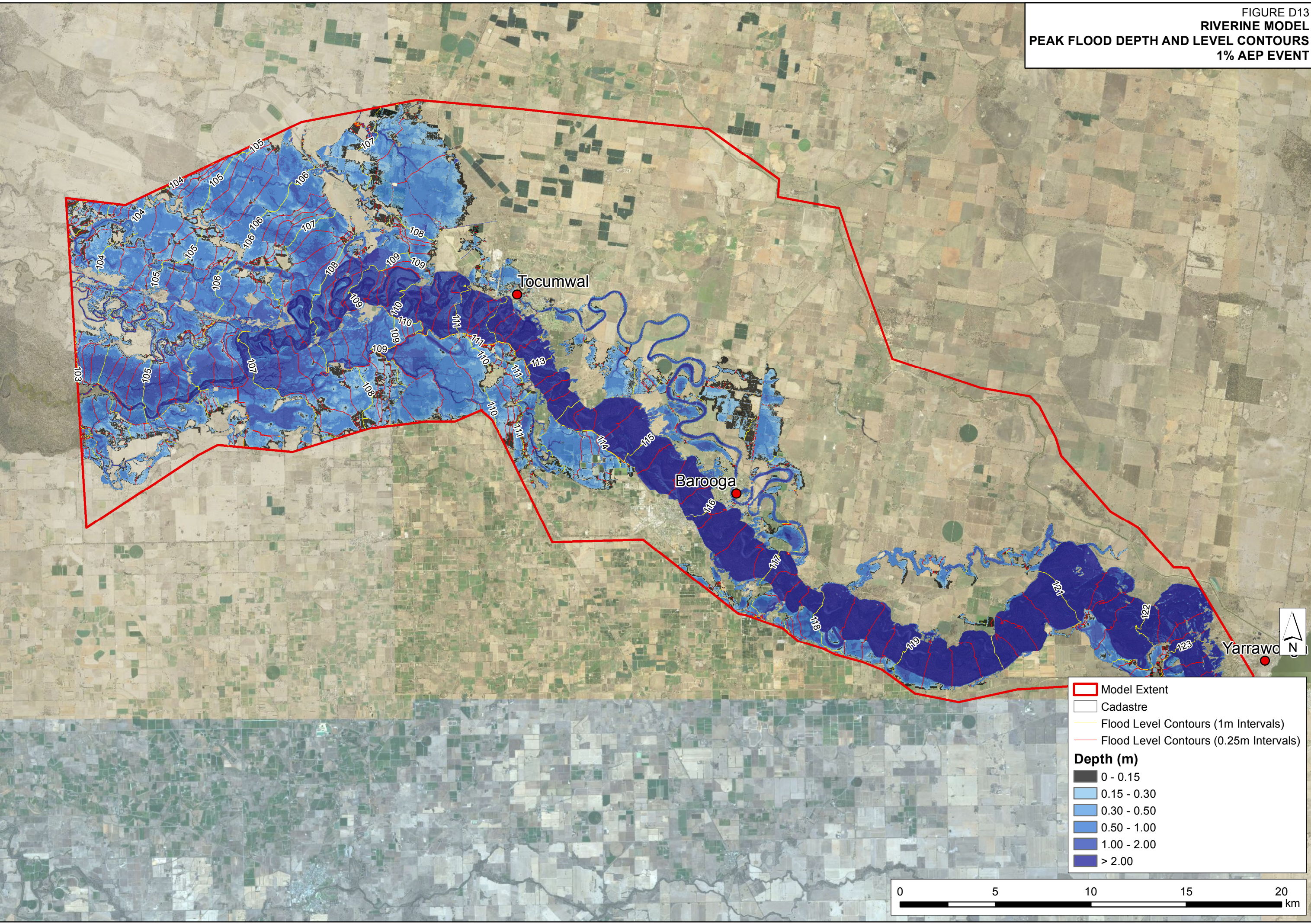


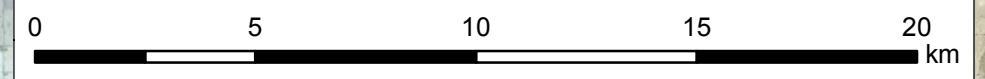
FIGURE D13
RIVERINE MODEL
PEAK FLOOD DEPTH AND LEVEL CONTOURS
1% AEP EVENT

J:\Jobs\120074\ArcGIS\ArcMaps\241021_report\Appendix_D_Riverine_Flood_Map\Replace_MXD\Figure_Numbers\Test_Output\FigureD13_Mur_Riv_Study_Area_Peak_Flood_Depth_100Y.mxd.mxd



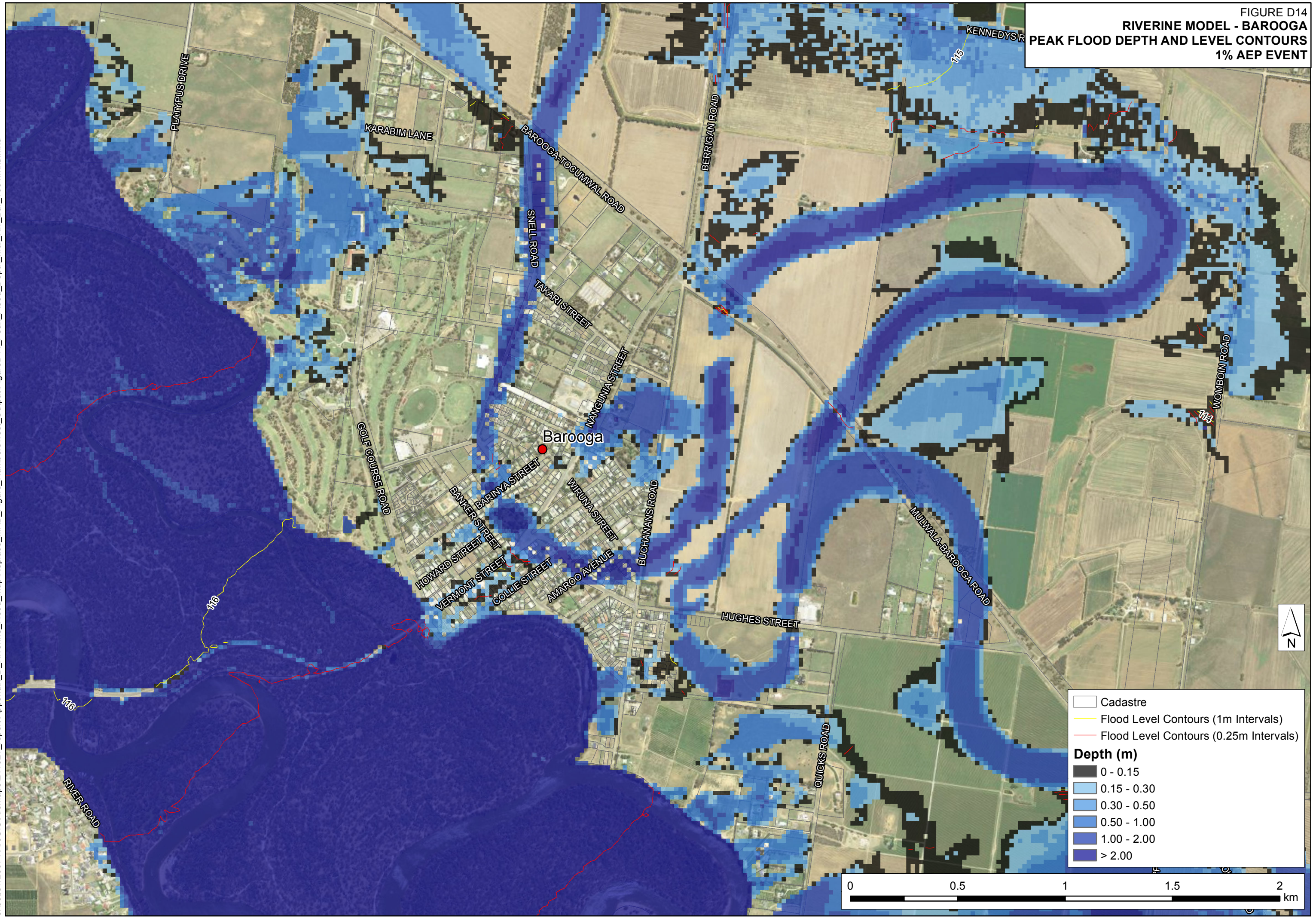
Model Extent
Cadastral
Flood Level Contours (1m Intervals)
Flood Level Contours (0.25m Intervals)

Depth (m)
0 - 0.15
0.15 - 0.30
0.30 - 0.50
0.50 - 1.00
1.00 - 2.00
> 2.00



J:\Jobs\120074\ArcGIS\ArcMaps\241021_report\Appendix_D_Riverine_Flood_Map\Replace_MXD\Figure_Numbers\Test_Output\FigureD14_Peak_Flood_Depth_Mur_Riv_Bar_100Y.mxd

FIGURE D14
RIVERINE MODEL - BAROOGA
PEAK FLOOD DEPTH AND LEVEL CONTOURS
1% AEP EVENT



Legend:

- Cadastre
- Flood Level Contours (1m Intervals)
- Flood Level Contours (0.25m Intervals)

Depth (m)

- 0 - 0.15
- 0.15 - 0.30
- 0.30 - 0.50
- 0.50 - 1.00
- 1.00 - 2.00
- > 2.00

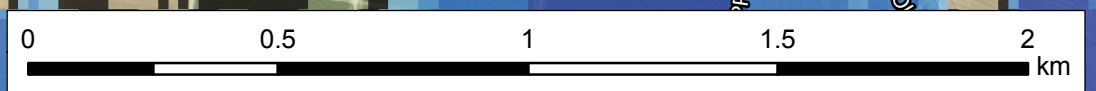


FIGURE D15
RIVERINE MODEL - TOCUMWAL
PEAK FLOOD DEPTH AND LEVEL CONTOURS
1% AEP EVENT

J:\Jobs\120074\ArcGIS\ArcMaps\241021_report\Appendix_D_Riverine_Flood_Map\Replace_MXD_Figure_Numbers\Test_OutputFigureD15_Peak_Flood_Depth_Mur_Riv_Tocum_100Y.mxd.mxd

