

FIGURE C13
OVERLAND MODEL
PEAK FLOOD DEPTH
1% AEP EVENT

J:\Jobs\120074\ArcGIS\ArcMaps\241021_report\Appendix_E_overland_Flood_Map\Replace_MXD\Figure_Numbers\Test_Output\FigureE13_Peak_Flood_depth_Ov_Study_Area_100Y.mxd

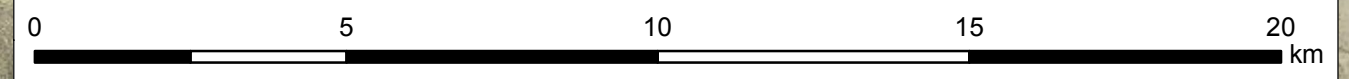
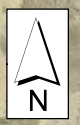
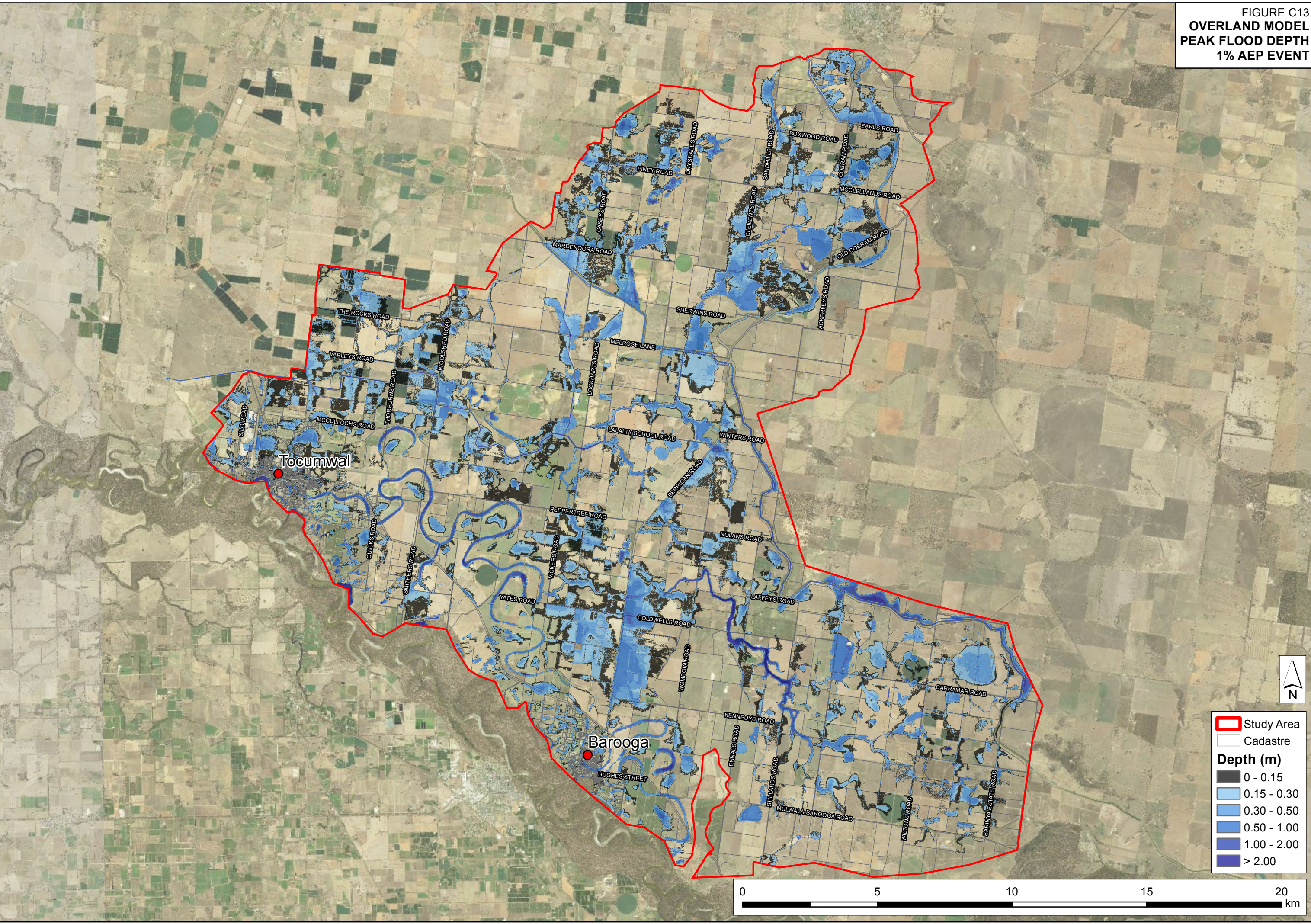


FIGURE C14
 OVERLAND MODEL - BAROOGA
 PEAK FLOOD DEPTH
 1% AEP EVENT

J:\Jobs\120074\ArcGIS\ArcMaps\241021_report\Appendix_E_overland_Flood_Map\Replace_MXD_Figure_Numbers\Test_Output\FigureE14_Peak_Flood_Depth_Ov_Bar_100Y.mxd.mxd

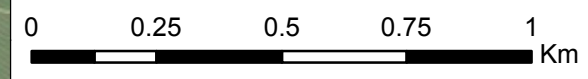
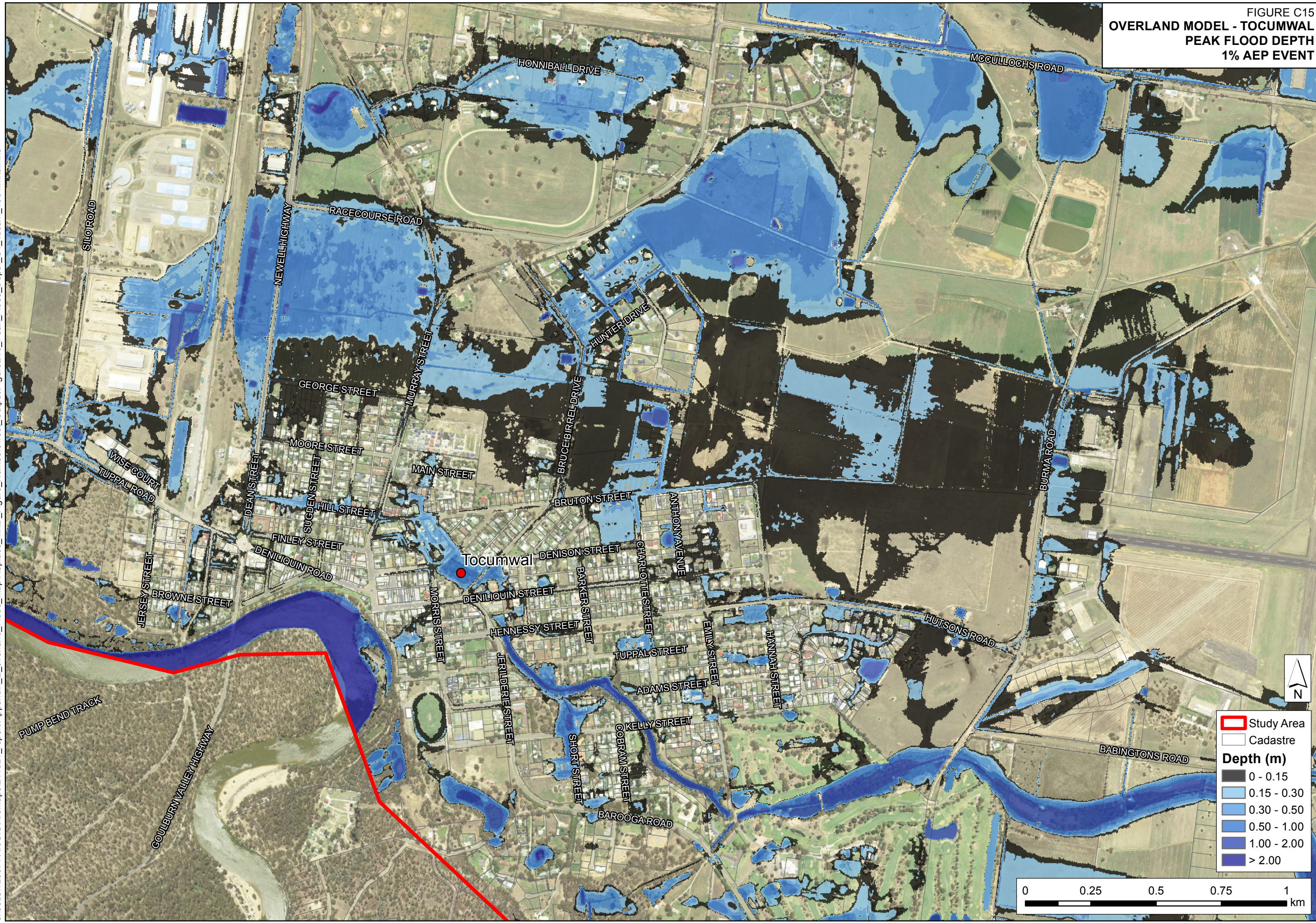


FIGURE C15
 OVERLAND MODEL - TOCUMWAL
 PEAK FLOOD DEPTH
 1% AEP EVENT

J:\Jobs\120074\ArcGIS\ArcMaps\241021_report\Appendix_E_overland_Flood_Map\Replace_MXD_Figure_Numbers\Test_Output\FigureE15_Peak_Flood_Depth_Ov_Tocum_100Y.mxd.mxd



Study Area
 [Red outline] Study Area
 [White outline] Cadastre

Depth (m)

[Lightest Blue]	0 - 0.15
[Light Blue]	0.15 - 0.30
[Medium Light Blue]	0.30 - 0.50
[Medium Blue]	0.50 - 1.00
[Dark Blue]	1.00 - 2.00
[Darkest Blue/Purple]	> 2.00

